

Series 42-5 Wedge Lok

DSCC 89064 & CID 59789

### RECOMMENDED GAP WIDTH

PCB + 6.35 (.250)

### RECOMMENDED TORQUE

80 N-cm (7 in-lbs)\*

### WEIGHT

.98 g/cm (.088 oz/in)

### MATERIALS AND FINISH

#### WEDGES

##### Material:

Aluminum Alloy  
6061-T6 per QQ-A-200/8

##### Finish:

See finish table on opposite page

#### SCREW

.09-in. or 2.5-mm hex. socket head cap screw, depending on mounting configuration

##### Material:

300 series stainless steel per QQ-S-763  
ASTM A-582  
A286 per FF-S-86 with dry film lube per MIL-L-46010 for "TLC" option

##### Finish:

Passivated per AMS2700

#### ALIGNMENT SPRINGS

##### Material:

301 stainless steel half hard per AMS 5518

##### Finish:

Passivated per AMS2700

#### OPTIONAL LOCK & FLAT WASHER

##### Material:

300 series stainless steel per QQ-S-763 and ASTM A-582

##### Finish:

Passivated per AMS2700

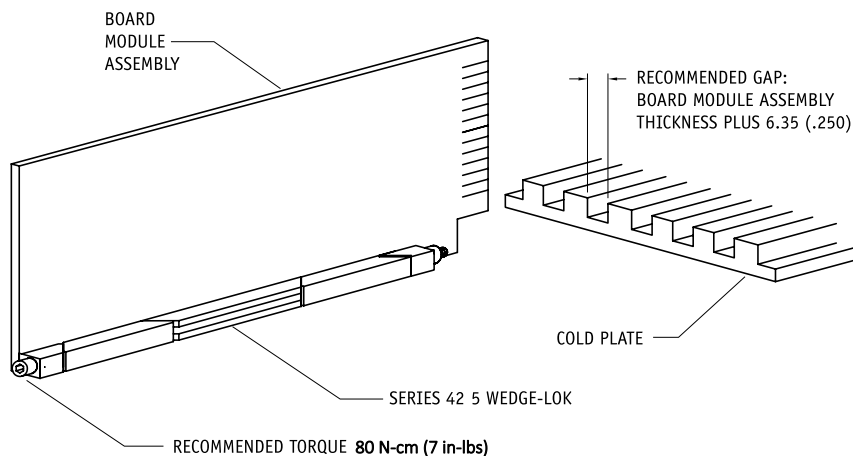
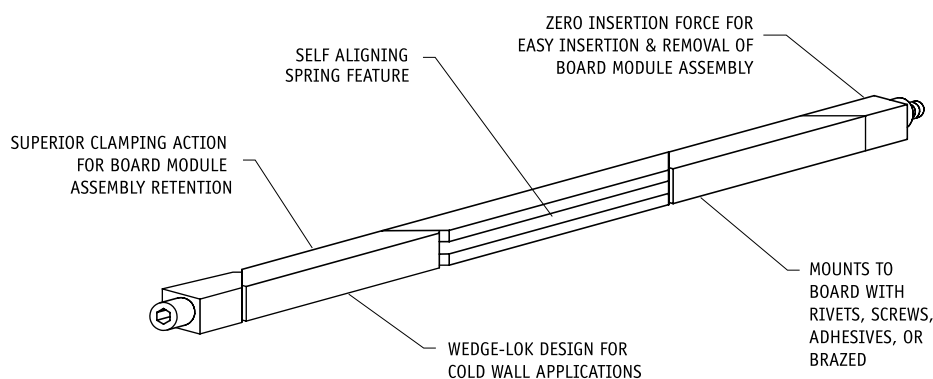
#### OPTIONAL LOCKNUT

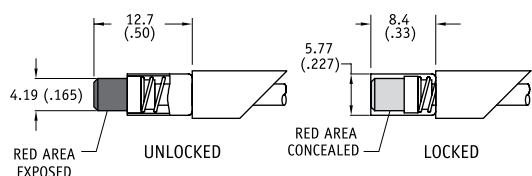
##### Material:

Type A286 stainless steel per ASTM AMS 5525

##### Finish:

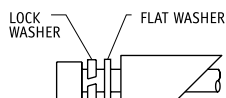
Silver plate per AMS 2410





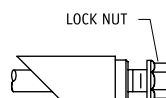
### VI OPTION \*

Indicates assembly is unlocked (adds 5.1 (.20) to screw length)



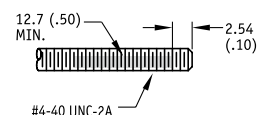
### LF OPTION \*

Provides additional resistance to shock and vibration (adds 2.5 (.10) in screw length)



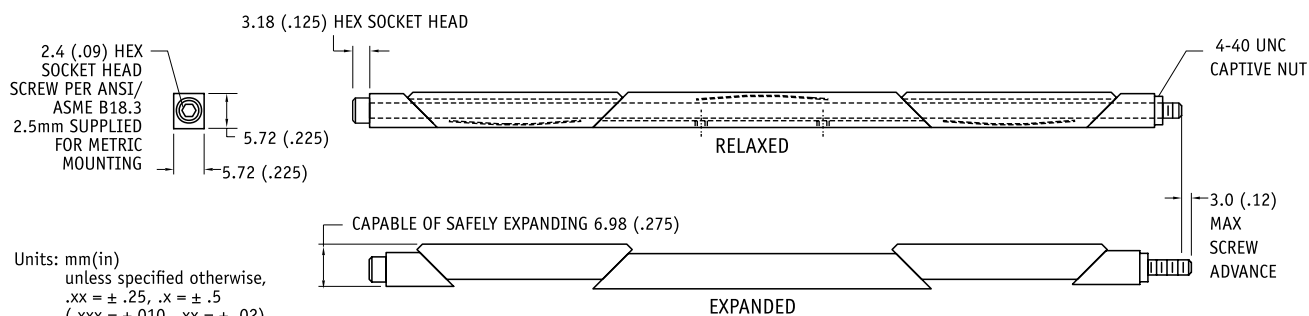
### LN OPTION

Captivates rear wedge when untorqued (adds 2.5 (.10) to screw length)



### LO OPTION

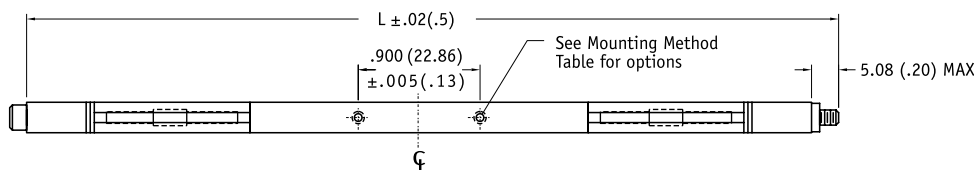
Provides additional resistance to shock and vibration



Units: mm(in)  
unless specified otherwise,  
.xx = ± .25, .x = ± .5  
(.xxx = ±.010, .xx = ± .02)

### MOUNTING HOLE LOCATION

22.86 (.900) hole spacing centered on mounting body  
-10 thru -13 2 holes  
-14 thru -24 4 holes



### Part Number Code

42-5 VI - 10 - B - LF - LN - S - L

### Type

Torque Limiting Version\* **TLC**  
Standard version with Visual Indicator **VI**  
Standard version **[Blank]**

### Length

Length in 12.7 (.50) increments **10 [127.0 (5.00)]**  
**to 24 [304.8 (12.00)]**

### Finish

BlackAnodized **B**  
Or select code letter from Finish Table

### Lock/Flat Washers and Locknut

Lock Washer and Flat Washer **LF**  
None **[Blank]**

Lock Nut **LN**  
None **[Blank]**

### Mounting

Standard 2-56 UNC-2B tapped holes **[Blank]**  
or choose from Mounting Method Table

### Lock Patch

Lock Patch **L**  
None **[Blank]**

### FINISH TABLE

CODE LETTER	SURFACE FINISH
[blank]	CHEMICAL FILM PER MIL-C-5541, CLASS 1A, GOLD, NON ROHS COMPLIANT
CC	CHEMICAL FILM PER MIL-C-5541, CLASS 1A, CLEAR
EN	ELECTROLESS NICKEL PER MIL-C-26074, CLASS 4, GRADE B, BRIGHT
N	NICKEL PLATE PER QQ-N-290, CLASS 1, GRADE G, BRIGHT
B	BLACK ANODIZE PER MIL-A-8625, TYPE II, CLASS 2
B3	HARD BLACK ANODIZE PER MIL-A-8625, TYPE III, CLASS 2
B3D	HARD BLACK ANODIZE WITH DRY FILM LUBE PER MIL-L-46010

### MOUNTING METHOD TABLE

CODE LETTER	METHOD
[blank]	2-56 UNC-2B TAPPED HOLE
R	RIVET MOUNT (Ø 1.70 + .10/-.03 (.067 + .004/.001) THRU □ Ø3.96 (.156) □ 5.08 (.200) √ Ø 3.56 (.140) x 100°) RIVET "R" PARTS ARE SHIPPED UNASSEMBLED AND EXCLUDE ALIGNMENT PINS
A	NO MOUNTING HOLES
T	0-80 UNF-2B TAPPED HOLE
M2	M2 X .40 TAPPED HOLE
M	M2.5 X .45 TAPPED HOLE

\*NOTE: FOR TORQUE LIMITING (TLC) VERSION:  
VISUAL INDICATOR (VI), LOCK/FLAT WASHER (LF) NOT AVAILABLE  
ONE ALIGNMENT SPRING FOR -10 TO -15 LENGTHS  
MUST CLICK 3+ TIMES FOR PROPER INSTALLATION